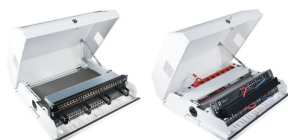
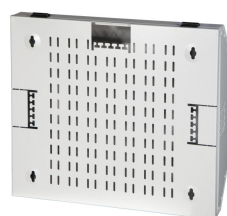


DATASHEET

19" Wall Housing 3U Vertical + 5U Horizontal, RAL7035



General data

Steel sheet housing for wall mounting, completely pre-assembled, self-ventilated

Wall raising (overall depth) only 150 mm

3U for vertical mounting of 19" components, max. depths each 1 x 360 / 340 / 300 mm

5U additionally for horizontally mounting of 19" components, max. depth 80 mm

3U level 180° swiveling

Cover with window, hinged and lockable

Pre-punched ventilation openings in housing

Pre-punched cable clamps in rear wall

Material steel sheet

Paint finish RAL7035, light grey / RAL9005, jet black / RAL9010, white

Protection degree IP20

Included in delivery: 1 x key

Allgemeine Daten

Modular spacing

482.6 mm (19 inch)

This datasheet was created automatically on 26-10-2022 . Technical changes reserved.



DATASHEET

19" Wall Housing 3U Vertical + 5U Horizontal, RAL7035

With front door	True
Type of ventilation	Passive
Demountable	True
Surface finishing	powder coating
Number of cartons	1
With roof plate	True
Mounting level	Front side
With sidewall	True
With earthing	True
Number of doors	1
Material	steel
Degree of protection (IP)	IP20
Model	With swing frame
Type of profile rail	L-shaped

Available variants

ArtNr.	Bezeichnung	Colour	Depth	Height	Max. Load	Number of height units	Width	RAL-Nummer
691703V	19" Wall Housing 3U Vertical + 5U Horizontal, RAL7035	grey	146 mm	475 mm	30 kg	8 U	537 mm	7035
691703VTS	19" Wall Housing 3U Vertical + 5U Horizontal, RAL9005	black	146 mm	475 mm	30 kg	8 U	537 mm	9005
691703VWS	19" Wall Housing 3U Vertical + 5U Horizontal, RAL9010	white	146 mm	475 mm	30 kg	8 U	537 mm	9010

This datasheet was created automatically on 26-10-2022 . Technical changes reserved.

